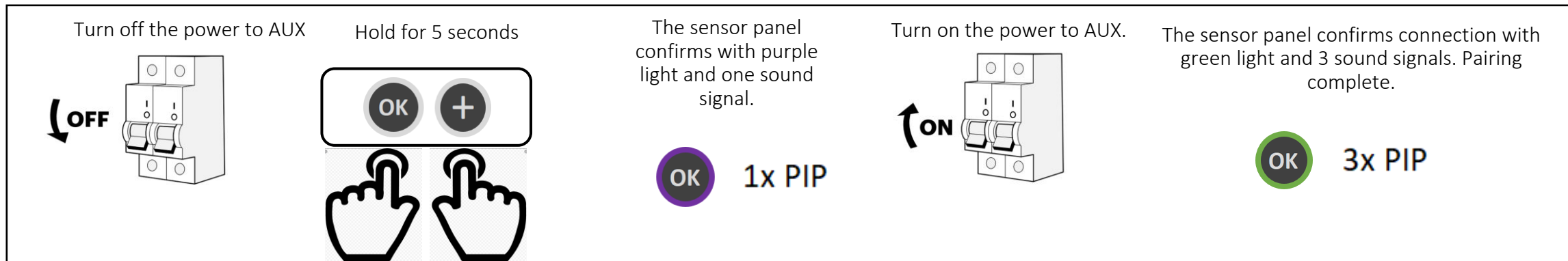


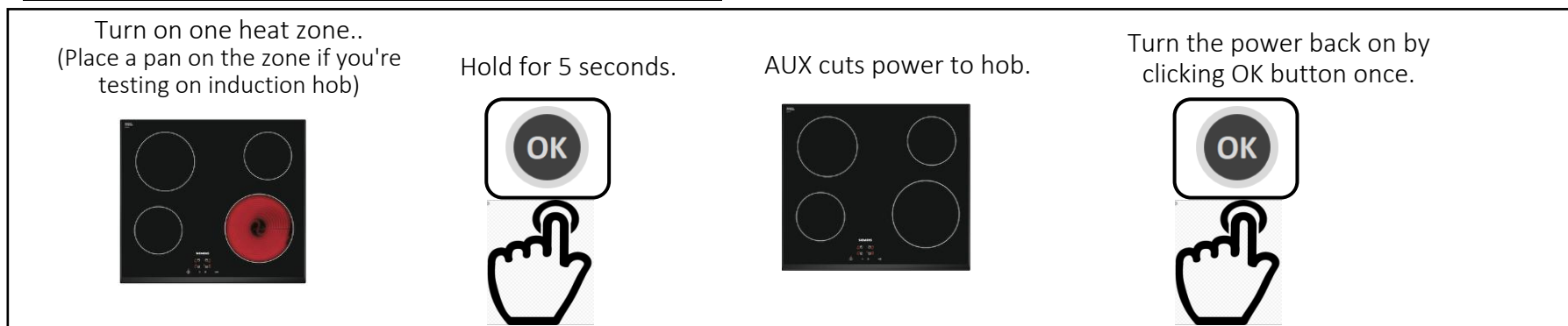


Manual connection of AUX (without app)



- Electrical installation of the AUX unit is required. As described in installation manual for the selected AUX unit.
- Click OK button and PLUS button at the same time. Hold for 5 seconds until you hear one sound signal and the OK button lights purple.
- Turn on the power for the hob. The sensor panel will automatically connect to the AUX unit and 3 sound signals and green light on OK button will signal pairing completed.

Function control of AUX (without app)



RØROS[®]
HETTA